

Hawk-Matic® *HK-1 Manual*

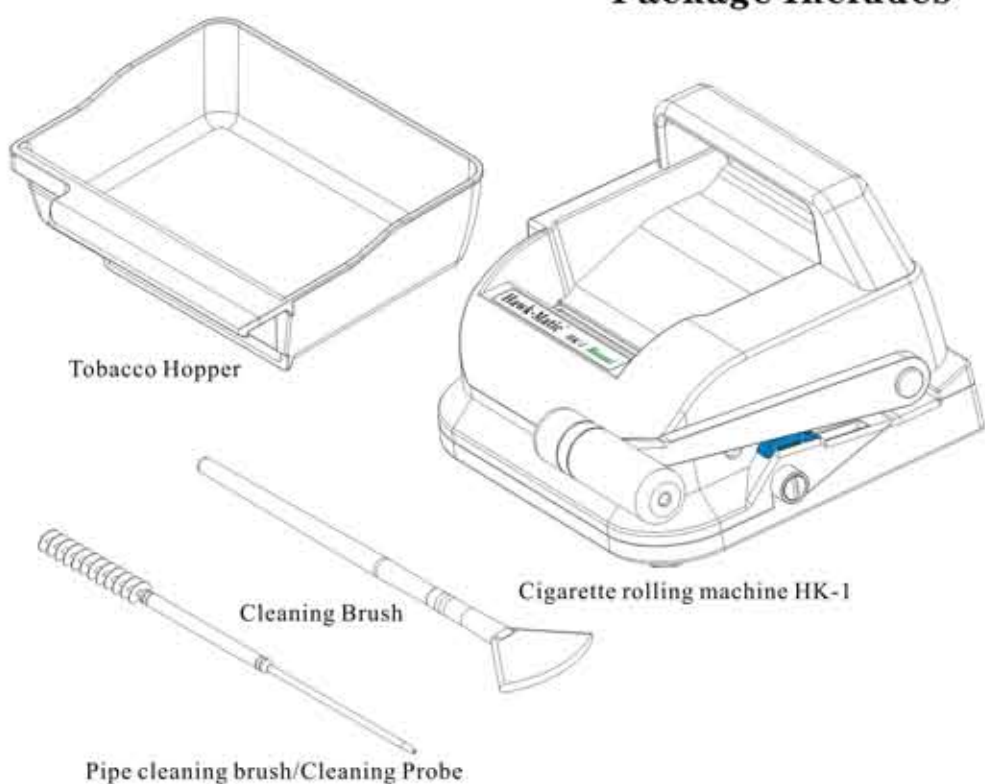
Quick Start Manual

Website: www.Hawkmatic.eu

Email: info@hawkmatic.eu

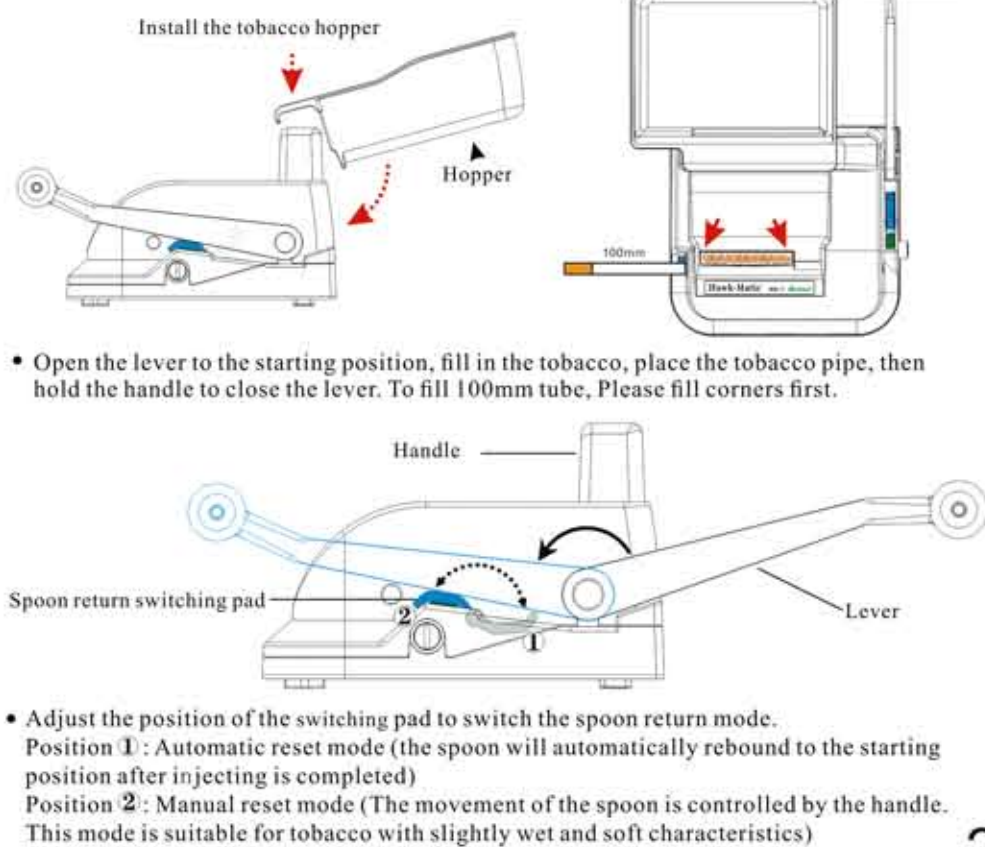


Package Includes



1

Product Instructions

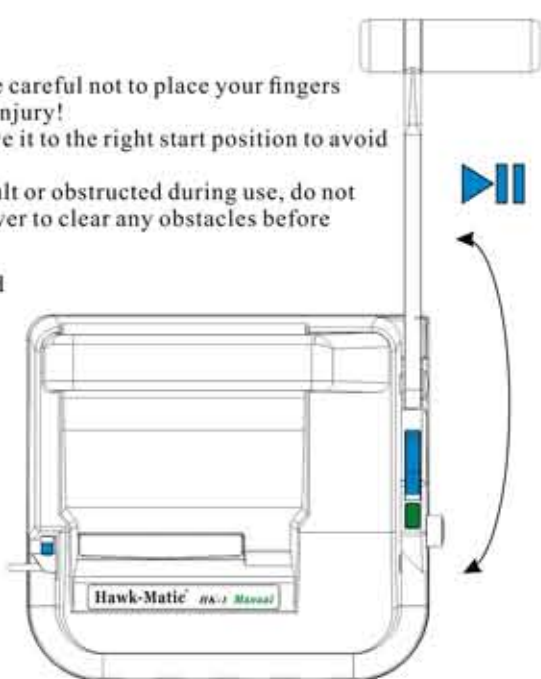


2

points for attention!

- When pressing and pulling the lever, be careful not to place your fingers at the entrance of the tobacco to avoid injury!
- When opening the lever, be sure to move it to the right start position to avoid spoon reset failure!
- When pressing on the lever feels difficult or obstructed during use, do not forcefully press it. Instead, open the lever to clear any obstacles before continuing with the operation.
- Common reasons for feeling obstructed when pressing the lever:

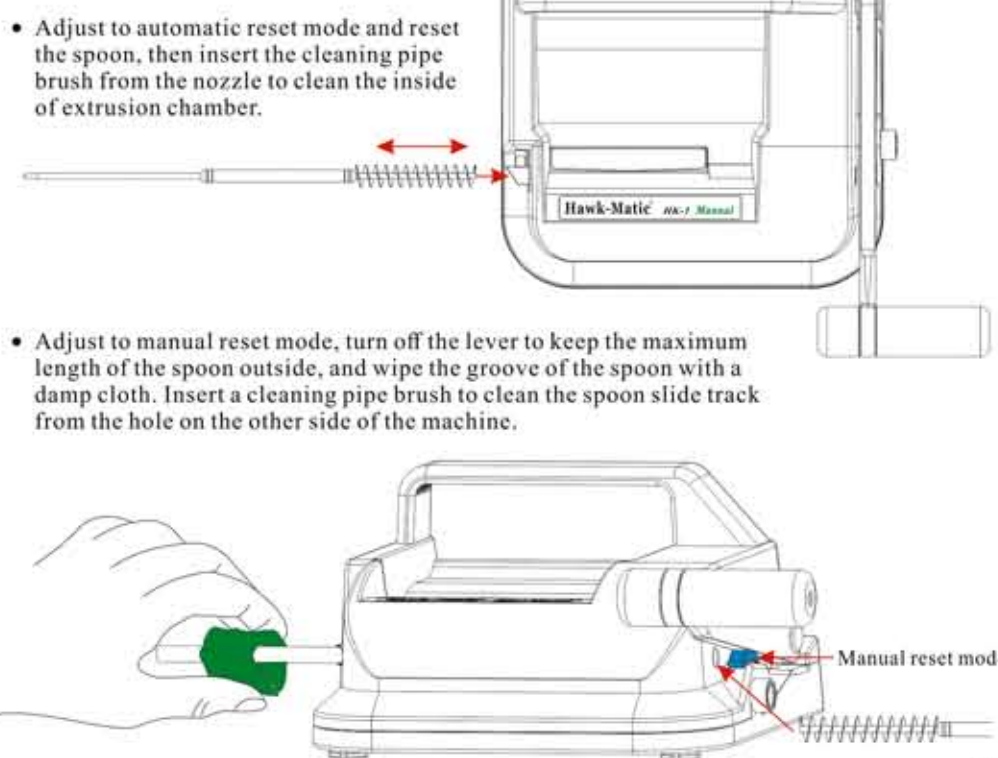
- The filling of the tobacco in the chamber is too tight (Open the lever and reduce tobacco)
- Pushing spoon not fully reset, tobacco stuck (Open the lever in place)
- Tobacco oil powder adheres to the chamber and spoon (Follow the "Cleaning" guidelines for cleaning)



If the spoon cannot be reset, the chamber should be cleaned, and the lever should be pressed without tobacco to retract the spoon in place before continuing to use.

3

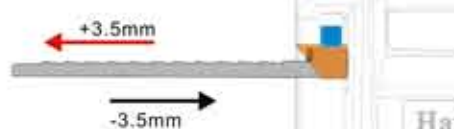
Cleaning Instruction



4

Use of adjusting screw

- The oil in the cylinder will gradually consume out during the operation of the machine, resulting in the spoon not being pushed out to a sufficient distance (As shown in Figure 2). In order to maintain the high quality of the cigarettes, the spoon needs to be properly adjusted by adjusting screws
- Turning the adjustment screw one turn can extend or shorten the pushing distance of the spoon by 3.5mm. Clockwise rotation will extend, while counterclockwise rotation will shorten.



- After adjustment, switch to manual reset mode, press the lever to keep the spoon out, and check if it has been adjusted to the standard distance (as shown in Figure 1).

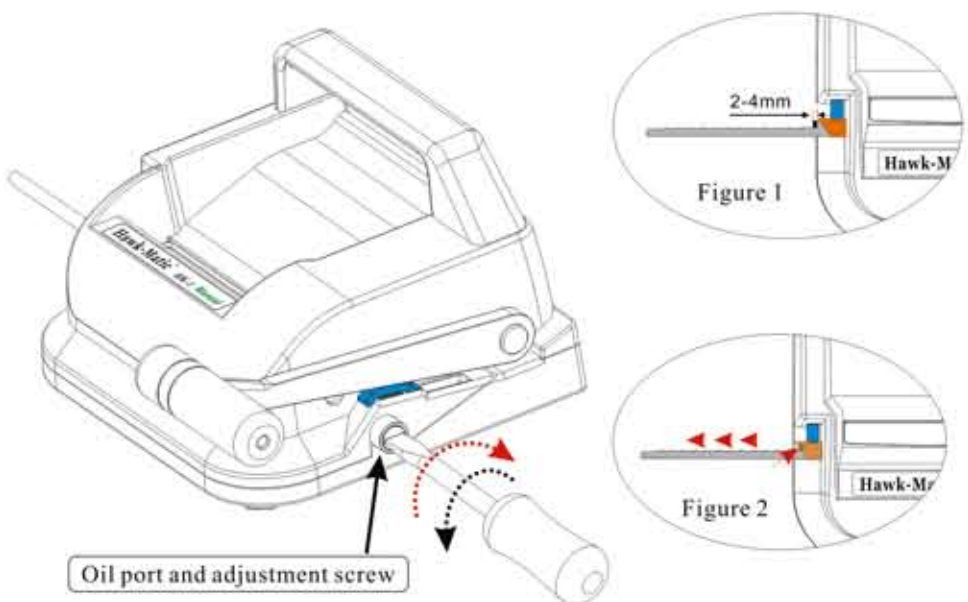


Do not over adjust. If the spoon extends too far, it will not be able to reset and the machine will not function properly.

5

www.Hawkmatic.eu

The standard distance is that the root of the spoon exceeds the nozzle by 2-4mm.



If the adjusting screw has been turned clockwise to the end, the distance of the spoon pushing out is still not enough, the hydraulic oil needs to be replenished

Refill hydraulic oil Adding 46 # Hydraulic Oil

1. Secure the lever and wrap a tissue or cotton cloth around the oil port.
2. Stand the machine on its side with the oil port facing upwards and turn counterclockwise to open the adjustment screw.
3. Fill with a tool with a needle or thin hose, insert the tube into the bottom of the screw hole in the oil port and slowly fill (as shown in Figure 3).

Ensure that the lever is fixed before removing the adjustment screw! Prevent touching the oil cylinder during refilling.

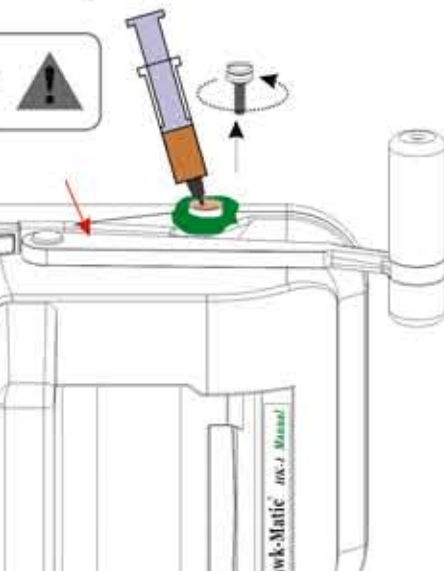
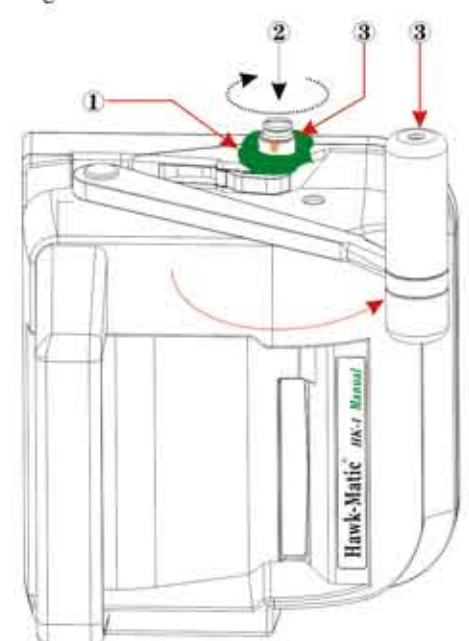


Figure 3

6

4. After adding an appropriate amount of hydraulic oil, rotate the adjusting screw to tighten the sealing ring to the edge of the oil port. lightly close the lever to completely exhaust the air in the oil port, and adjust the spoon to the appropriate pushing distance according to the "Use of adjusting screw"
5. If the hydraulic oil is added excessively, the adjusting screw sealing to overflow can be retracted the edge of the oil port, and lightly close the lever to overflow redundant hydraulic oil. Then repeat the above operation again.

- 1 Surround the oil port with tissue or cotton cloth to prevent spilled oil from contaminating the machine
- 2 Rotate the adjustment screw to return the sealing ring to the edge of the oil port
- 3 There should be no air left in the oil cylinder. It is necessary to lightly close the handle to allow the oil to slightly overflow from the oil port to ensure that the internal air is completely discharged
- 4 When adjusting screws are not installed, be careful to prevent the machine from tipping over. Excessive force to pull the lever may cause hydraulic oil to splash



www.Hawkmatic.eu